



# Explosive Overpressure Hazards

## LEPC Emergency Response Planning

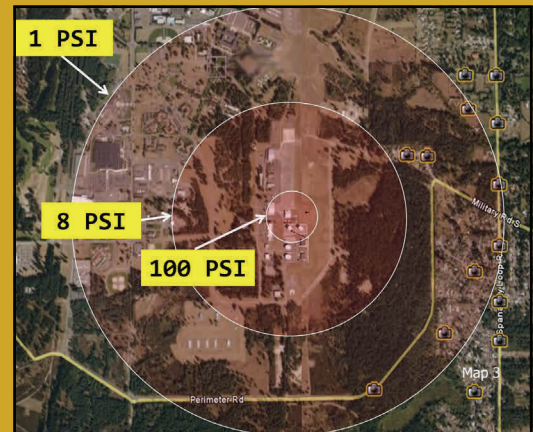
Lead your community to seamless integration of all-hazards planning by including explosion hazards, risk analysis, and assessment of response capabilities. ASG provides comprehensive hazard identification and risk assessment services that include explosive, flammable and reactive substances to determine overpressure zones. Identify critical infrastructure and populations at risk before an incident. Minimize risk, maximize safety.

- Explosive overpressure zones displayed in GIS for 1-psi, 8-psi and 100-psi impact areas
- Population at risk and critical infrastructure protection
- Casualty impact analysis includes type and number of casualties

### Explosion hazard and overpressure distances

Source	Quantity (gallons)	Overpressure Distances (Feet)		
		1 psi	8 psi	100 psi
Aviation Fuel	999,204	7511	3755	1502
Gasoline	397,102	2591	1295	518

### Impact Zone Graphics



### Casualty Impact Analysis: Type and Number

POPULATION SEVERITY						
Zones	Approximate Pressure Within Zones	Population	Percentage of Casualties			
			Fatalities	Delayed	Immediate	Minimal
1	100 psi	Indoor	99%	1%	0%	0%
		Outdoor	90%	10%	0%	0%
2	8 psi	Indoor	90%	10%	0%	0%
		Outdoor	10%	80%	10%	0%
3	1 psi	Indoor	10%	30%	40%	20%
		Outdoor	0%	10%	40%	50%